



TECNOSERVICE'21 srl

by Tinti Sergio
Via Carlo Pisacane, 134
61032 Fano (PU) Italy
P.IVA IT0200411413

Tel. +39 0721 805911
FAX +39 0721 809794
e-mail: staff@technochef.it
www.technochef.it
www.technochef.eu

Services and Technologies for professional catering since 1973



TECHNICAL CARD

Thermal input (Kw)	17,5
net weight (Kg)	85
gross weight (Kg)	95
breadth (mm)	800
depth (mm)	700
height (mm)	900

PROFESSIONAL DESCRIPTION

COMBINED KITCHEN with GAS HOB and 2 BURNERS on OPEN CABINET, MACROS 700 Line , HIGH POWER Series :

- **worktop and front and side panels in AISI 304 stainless steel ;**
- **solid plate in high thickness steel** with characteristics of **high resistance** and **heat distribution in differentiated thermal zones** : maximum temperature in the center and decreasing towards the edges;
- **7 kW central burner with optimized combustion** , operated by a valved tap with safety thermocouple and protected pilot light;
- **piezoelectric ignition** with silicone protection;
- **open fire burners entirely in nickel-plated cast iron with single and double crown, high power** equipped with pilot flame and guaranteed for life, operated by a valved tap with safety thermocouple and protected pilot light;
- **open fire power n°x kW : 1 x 3.5 kW + 1 x 7 kW ;**
- **cast iron grills ;**
- maximum cleaning and maintenance guaranteed by the complete removability of both the burner body and the burner trays;
- adjustable feet;
- **2 year warranty .**

Accessories/Options :

- doors per compartment

CE mark





Made in Italy

CODE	DESCRIPTION	PRICE/DELIVERY
BS-G7T4P2FM	COMBINED KITCHEN with GAS HOB and 2 BURNERS on OPEN CABINET, BERTOS, MACROS 700 Line, HIGH POWER Series, thermal power 17.5 Kw, weight 85 Kg, dim.mm.800x700x900h	



macros 700

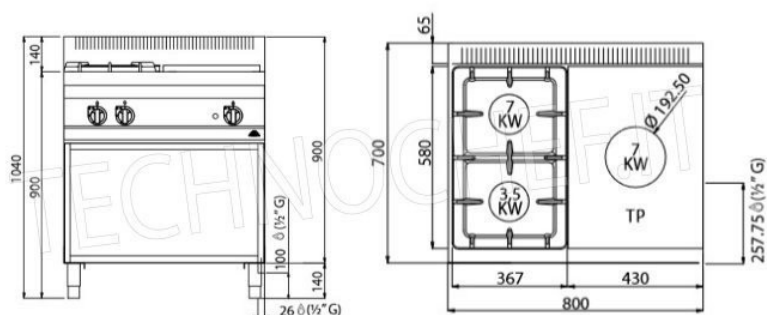
highpower

	n.	1	1	TP
	Ø mm	80	110	70
	kW	3,5	7	7
	kcal/h	3.010	6.020	6.020
	Btu/h	11.942	23.884	23.884
	kW	17,5		
	kcal/h	15.050		
	Btu/h	59.710		
	TOT.			
	G30/G31	kg/h	1,38	
	G20	m³/h	1,85	
	G25	m³/h	2,16	



macros 700

highpower



Macros 700

HIGH POWER



3,5 kW



7 kW