



TECNOSERVICE'21 srl

by Tinti Sergio
Via Carlo Pisacane, 134
61032 Fano (PU) Italy
P.IVA IT0200411413

Tel. +39 0721 805911
FAX +39 0721 809794
e-mail: staff@technochef.it
www.technochef.it
www.technochef.eu

Services and Technologies for professional catering since 1973



TECHNICAL CARD

power supply	Trifase
Volts	V 400/3 + N
frequency (Hz)	50
net weight (Kg)	95
breadth (mm)	1200
depth (mm)	700
height (mm)	900

PROFESSIONAL DESCRIPTION

ELECTRIC COOKER WITH 6 SQUARE PLATES on OPEN CABINET, MACROS 700 Line, HIGH POWER Series :

- **worktop** and **front panels** in **AISI 304 stainless steel** ;
- **one-piece watertight** molded top;
- **cast iron plates** with **safety thermostat** and **6-position selector** which activates **6 different concentric power zones** ;
- **6 square plates** of **220 x 220 mm** each ;
- **cooking zone power** n°x Kw : **6 x 2.6** ;
- voltage and work control lights;
- adjustable feet;
- **2 year warranty** .

CE mark
Made in Italy

CODE	DESCRIPTION	PRICE/DELIVERY
BS-E7PQ6M	ELECTRIC STOVE 6 PLATES on OPEN CABINET, BERTOS, MACROS 700 line, HIGH POWER Series, with 6 SQUARE plates measuring 220x220 mm, INDEPENDENT CONTROLS, 6 power levels, V.400/3+N, Kw.15.6 Weight 95 Kg, dim.mm.1200x700x900h	



macros 700






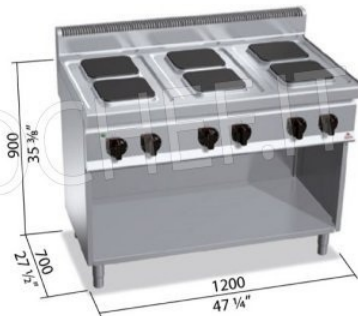
HIGH POWER

2,6 kW	2,6 kW	2,6 kW	▶ 220 x 220 mm
2,6 kW	2,6 kW	2,6 kW	



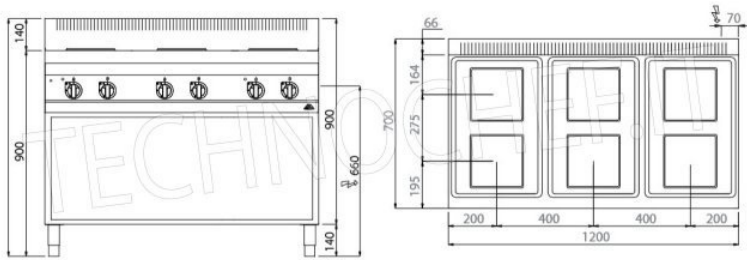
macros 700

	n.	6
	mm	220x220
	kW	2,6
		
		380 - 415 V3N~
		
TOT.		kW 15,6





MACROS 700



3 YEAR
GUARANTEE