



**TECNOSERVICE'21 srl**

by Tinti Sergio  
Via Carlo Pisacane, 134  
61032 Fano (PU) Italy  
P.IVA IT0200411413

Tel. +39 0721 805911  
FAX +39 0721 809794  
e-mail: [staff@technochef.it](mailto:staff@technochef.it)  
[www.technochef.it](http://www.technochef.it)  
[www.technochef.eu](http://www.technochef.eu)

Services and Technologies for professional catering since 1973



#### TECHNICAL CARD

<b>power supply</b>	Monofase
<b>Volts</b>	V 230/1
<b>frequency (Hz)</b>	50
<b>motor power capacity (Kw)</b>	1,18
<b>gross weight (Kg)</b>	150
<b>breadth (mm)</b>	810
<b>depth (mm)</b>	715
<b>height (mm)</b>	2085

#### PROFESSIONAL DESCRIPTION

**FREEZER-FREEZER CABINET for PASTRY, 1 Door, lt.650, Temp.-10°/-30°C, ECOLOGICAL in Class E :**

- **Internal/external in AISI 304 stainless steel ;**
- external back, bottom and internal technical compartment in galvanized/laminated steel;
- Rounded internal corners for easy cleaning;
- **Racks and guides in AISI 304 stainless steel ;**
- AISI 304 stainless steel handle, 2 mm thick;
- 1 self-closing door with 105° stop, hinges on the right;
- Triple chamber door seal, magnetic, easily replaceable;
- **Suitable for holding 20 600x400 mm pastry trays ;**
- **Ventilated refrigeration** with indirect air flow;
- **Hot gas/electric defrost** (remote);
- **Automatic evaporation** of condensate;
- Monocoque structure with **75 mm insulation** - CFC/HCFC free;
- Anti-corrosion treated evaporator;
- Electronic control, flush panel display;
- Made with FSS - Fast Service System - technology for easy and fast service;
- Prepared for connection to a remote supervision system;
- **led illumination ;**
- **Lock with key ;**

- Adjustable **feet in AISI 304 stainless steel** h 100-150 mm.

#### TECHNICAL DATA :

- Gross capacity 573 litres
- Temperature range -10°/-30°C
- Plug-In refrigeration unit
- Energy efficiency class: E
- Energy efficiency index: 81.8
- Annual consumption: 2467 kW/h per annum
- 24h consumption: 6,759 kW/h/24h
- Climate class: 5
- Ecological refrigerant gas R452a
- Defrost: With hot gas
- Solenoid valve supplied as standard
- Power absorbed 1180 W
- Current absorbed 6.2 A
- Cooling capacity 751 W\* (Evap. -30°C Cond. +55°C)

#### Supplied :

- 20 pairs of guides for 60x40 cm trays or grills
- LED lighting

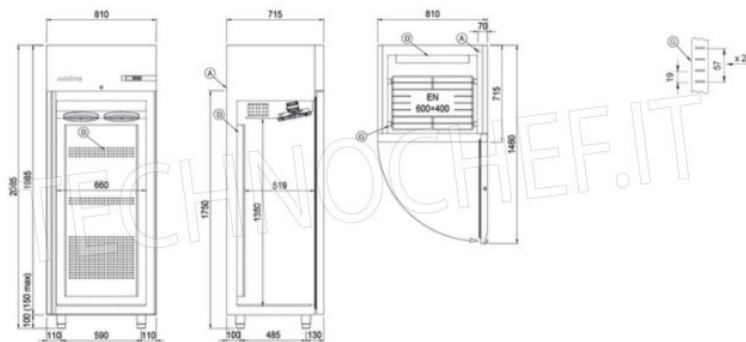
#### CE MARK

**MADE IN ITALY**

CODE	DESCRIPTION	PRICE/DELIVERY
<b>CD-A80/1T</b>	Pastry Freezer-Freezer Cabinet, for 20 TRAYS measuring 600x400 mm, 1 Door, Professional, Temp.-10°/-30°C, Ventilated, ECOLOGICAL in Class E, Gas R452a, V.230/1, Kw.1,18 , Weight 150 Kg, dim.mm.810x715x2085h	



#### Disegno tecnico



A: Uscita cavo alimentazione  
G: Cremagliere

D: Diffusore flusso aria