



TECNOSERVICE'21 srl

by Tinti Sergio
Via Carlo Pisacane, 134
61032 Fano (PU) Italy
P.IVA IT0200411413

Tel. +39 0721 805911
FAX +39 0721 809794
e-mail: staff@technochef.it
www.technochef.it
www.technochef.eu

Services and Technologies for professional catering since 1973



TECHNICAL CARD

power supply	Monofase
Volts	V 230/1
frequency (Hz)	50
motor power capacity (Kw)	0,43
net weight (Kg)	125
gross weight (Kg)	150
breadth (mm)	740
depth (mm)	815
height (mm)	2085

PROFESSIONAL DESCRIPTION

1 door REFRIGERATOR CABINET, ECOLOGICAL ENERGY SAVING version - CLASS A, HIGH THICK cabinet, 700 liter capacity, operating temperature -2° +8° C:

- **external/internal in AISI 304 stainless steel,**
- **ventilated refrigeration ,**
- **insulation thickness 75 mm ,**
- rounded internal corners,
- adjustable stainless steel feet,
- **reversible door** with 105° stop,
- **Full-height profiled door handle in PV C ,**
- replaceable magnetic seal,
- **3 pairs of stainless steel guides** and **3 GN2/1 Rilsan grids** per door,
- **evaporator treated by cataphoresis ,**
- **PVC evaporator cover ,**
- totally replaceable refrigerant system, running on ecological **R290 natural gas , which ensures energy savings reaching peaks of 80%** compared to similar products... few virtuous ones.
- automatic defrost,
- automatic condensation evaporation,
- **Electronic thermometer-thermostat** with display,

- door **lock** with key,

Electronic control unit with :

- keyboard protection cover,
- high temperature alarm,
- open door alarm,
- maximum temperature storage.

Accessories/Options :

- Interior lighting
- Kit of 4 swivel wheels (2 with brakes), diameter 128 mm
- Door Opening Kit with Pedal

CE mark

Made in Italy

CODE	DESCRIPTION	PRICE/DELIVERY
TCF375-000100	Professional 1-door refrigerated cabinet, capacity 700 litres, ventilated, temp. -2°/+8°C, ecological version with ENERGY SAVING, CLASS A - Stainless steel 304, V.230/1, Kw.0.43, dim. mm.740x815x2085h.	

TECHNICAL CARD		
CODE/PICTURES	DESCRIPTION	PRICE/DELIVERY

TCF375-000504



Couple of type C guides

TCF375-000506



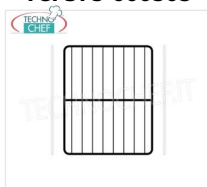
GN 2/1 plastic coated grid

TCF375-000503



Led lighting

TCF375-000505



GN2 / 1 stainless steel grid

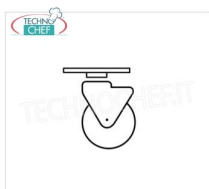
TCF375-000501



Door opening kit with pedal

TCF375-000502

Kit of 4 pivoting stainless steel wheels with brake



Caratteristiche principali



Fondo modulare
Consente l'installazione su ruote, piedini, zoccolo fisso o mobile.



Isolamento 75 mm
Spessore isolamento 75 mm CFC/HCFC free.



Serratura e fermo porta
Porte autochiudenti reversibili con fermo a 105° dotate di serratura con chiave.



Guarnizioni sostituibili ad alta tenuta
Geometria a tripla camera con innovativa mescola D7, efficacia d'isolamento superiore del 35% rispetto alle tradizionali.



Apertura a pedale
Facilita la movimentazione e l'inserimento di teglie e bacinelle pesanti (optional).



Evaporazione a costo zero
L'acqua prodotta dagli sbrinatori evapora sfruttando il calore dissipato dal sistema refrigerante.



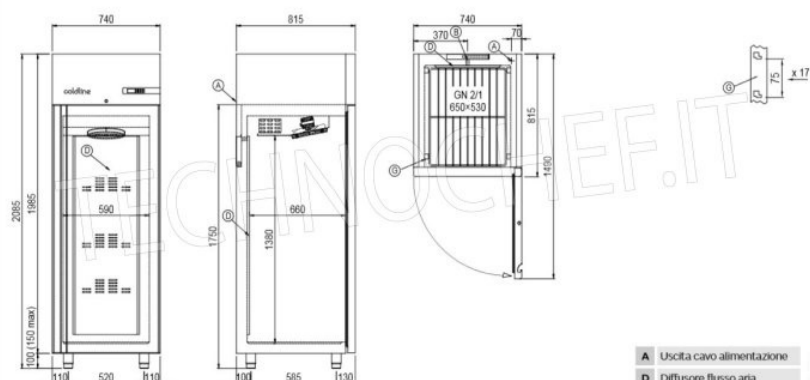
Ventilatore intelligente
I ventilatori si arrestano automaticamente all'apertura della porta per evitare l'aspirazione di aria calda.



Guide e cremagliere
Guide e cremagliere inox smontabili senza ausilio di attrezzi.



Armadio 700 lt



- A Uscita cavo alimentazione
- D Diffusore flusso aria
- G Cremagliera

