



**TECNOSERVICE'21 srl**

by Tinti Sergio  
Via Carlo Pisacane, 134  
61032 Fano (PU) Italy  
P.IVA IT0200411413

Tel. +39 0721 805911  
FAX +39 0721 809794  
e-mail: [staff@technochef.it](mailto:staff@technochef.it)  
[www.technochef.it](http://www.technochef.it)  
[www.technochef.eu](http://www.technochef.eu)

Services and Technologies for professional catering since 1973



CODE	DESCRIPTION	PRICE/DELIVERY
CD-A90/1T	Freezer-Freezer Pastry Cabinet, for 20 TRAYS of 600x800 mm or 40 TRAYS of 600x400 mm, 1 Door, Professional, Temp.-10°/-30°C, Ventilated, ECOLOGICAL in Class E, Gas R452A, V.230/1 , Kw.1,18, Weight 180 Kg, dim.mm.810x1015x2085h	

PROFESSIONAL DESCRIPTION

**FREEZER-FREEZER CABINET for PASTRY, 1 Door, It.900 -- Temp.-10°/-30°C, -- Suitable for containing 20 Pastry Trays mm 600x800 or 40 Pastry Trays mm 600x400 -- ECOLOGICAL in Class And :**

- **Internal/external in AISI 304 stainless steel ;**
- external back, bottom and internal technical compartment in galvanized/colaminated steel;
- Rounded internal corners for easy cleaning;
- **Racks and guides in AISI 304 stainless steel ;**
- Handle in AISI 304 stainless steel, 2 mm thick;
- 1 self-closing door with stop at 105°, hinges on the right;
- Triple chamber door gasket, magnetic, easily replaceable;
- **Ventilated refrigeration** with indirect air flow;
- **Hot gas / electric (remote) defrost ;**
- **Automatic evaporation** of condensate;
- Monocoque structure with **75 mm insulation** - CFC/HCFC free;
- Anti-corrosion treated evaporator;
- Electronic control, flush panel display;
- Made with FSS technology - Fast Service System - for an easy and fast service;
- Prepared for connection to a remote supervisory system;
- **LED lighting ;**
- **Lock with key ;**
- Adjustable **feet in AISI 304 stainless steel** h 100-150 mm.

**TECHNICAL DATA :**

- Gross capacity 872 l
- **Temperature range -10°/-30°C**
- Plug-In refrigeration unit
- **Energy efficiency class: E**
- Energy efficiency index: 83.6
- Annual consumption: 3813 kW/h annum
- Consumption 24h: 10.447 kW/h/24h
- Climate class: 5
- **R452A ecological refrigerant gas**
- Defrost: With hot gas
- Solenoid valve supplied as standard
- Absorbed power 1180 W
- Current consumption 6.2A
- Cooling capacity 751 W\* (Evap. -30°C Cond. +55°C)

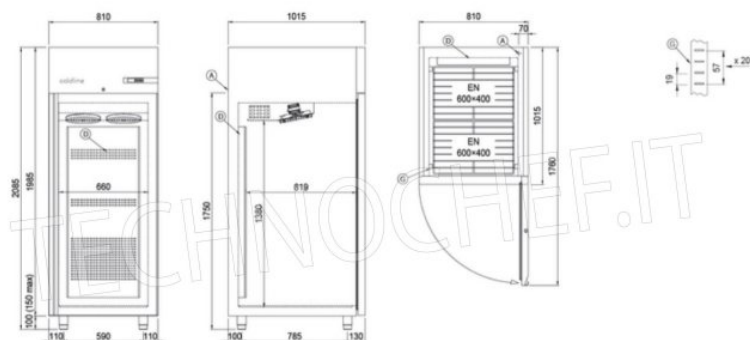
**Included :**

- **20 pairs of guides for 60x80 cm trays or grids** or 40 60x40 cm trays or grids
- LED lighting

**CE MARK**  
**MADE IN ITALY**

TECHNICAL CARD	
power supply	Monofase
Volts	V 230/1
frequency (Hz)	50
motor power capacity (Kw)	1,18
gross weight (Kg)	180
breadth (mm)	810
depth (mm)	1015
height (mm)	2085

# Disegno tecnico



A: Uscita cavo alimentazione

D: Diffusore flusso aria

G: Cremagliere