

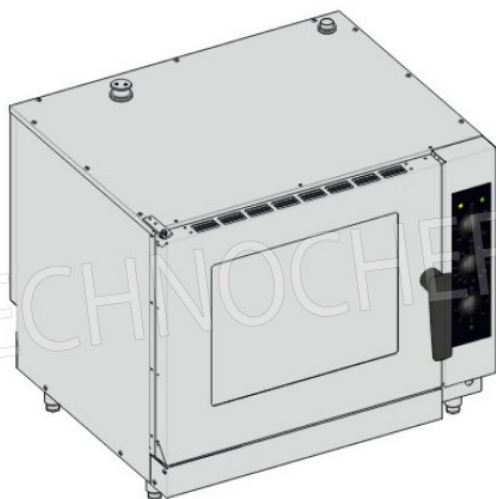


TECNOSERVICE'21 srl

by Tinti Sergio
Via Carlo Pisacane, 134
61032 Fano (PU) Italy
P.IVA IT0200411413

Tel. +39 0721 805911
FAX +39 0721 809794
e-mail: staff@technochef.it
www.technochef.it
www.technochef.eu

Services and Technologies for professional catering since 1973



CODE	DESCRIPTION	PRICE/DELIVERY
TCF312-000700	ELECTRIC convection steam oven for PASTRY, capacity 5 TRAYS of 600x400 mm, version with ELECTROMECHANICAL CONTROLS, V. 400/3, Kw 8,25, Weight 67 Kg, Dim. Mm. 930x785x740h	€ 2.621,32 <i>VAT excluded</i> Shipping to be calculated Delivery from 4 to 9 days
PROFESSIONAL DESCRIPTION		

ELECTRIC CONVECTION-STEAM VENTILATED OVEN for PASTRY with ELECTROMECHANICAL controls:

- cooking chamber in AISI 304 **stainless steel** with **rounded edges** and large radius with dimensions mm. 660x450x490h;
- **capacity 5 trays** of 600x400 mm;
- **Pitch** between the guides: **90 mm**
- door frame in stainless steel tube;
- **automatic reverser** of the chamber **fan** ;
- 7 levels of humidity selector;
- direct generation steam;
- **The electromechanical ovens operate on convection (50-275 ° C) and mixed cycle (60-275 ° C) with preheating ;**
- drain on the base of the cooking chamber;
- **internal lighting** in the cooking chamber;
- **door with double glass opening like a book** and athermic glass;
- opening dashboard with coupling system;
- removable deflector;
- **adjustable** cooking **chamber vent** ;
- gasket on oven facade with interlocking assembly;
- basin under the door to collect the condensate;
- handle with right / left opening;
- IPX4 water protection degree.

SUPPLIED:

- tray holder support.

OPTIONAL / ACCESSORIES:

- prover for ovens

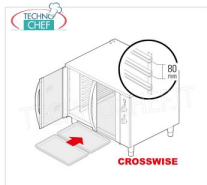
CE MARK
MADE IN ITALY

TECHNICAL CARD

power supply	Trifase
Volts	V 400/3
frequency (Hz)	50
motor power capacity (Kw)	8,25
net weight (Kg)	67
gross weight (Kg)	80
breadth (mm)	930
depth (mm)	785
height (mm)	740

TECHNICAL CARD

CODE/PICTURES	DESCRIPTION	PRICE/DELIVERY
---------------	-------------	----------------

TCF312-000207**TECHNOCHEF - Prover cabinet for 14 pastry trays measuring 600x400 mm**

Prover cabinet with 2 glass doors for 14 PASTRY TRAYS of 60x40 cm, with HUMIDIFIER suitable as a base for OVENS of 3, 5 and 8 trays, V. 230/1, Kw 2,6, dim. cm. 96x84x78h

€ 1.351,61*VAT excluded***Shipping to be calculated****Delivery** from 8 to 15 days

