

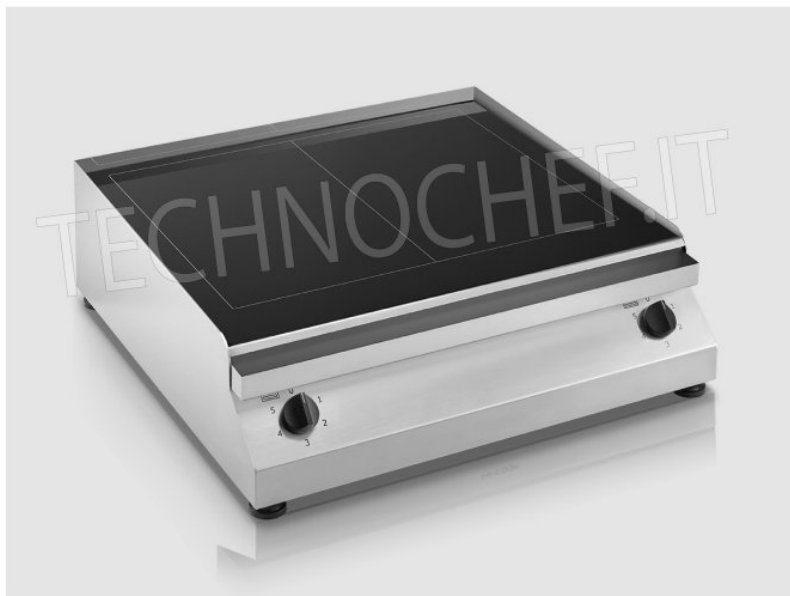


TECNOSERVICE'21 srl

by Tinti Sergio
Via Carlo Pisacane, 134
61032 Fano (PU) Italy
P.IVA IT0200411413

Tel. +39 0721 805911
FAX +39 0721 809794
e-mail: staff@technochef.it
www.technochef.it
www.technochef.eu

Services and Technologies for professional catering since 1973



| CODE | DESCRIPTION | PRICE/DELIVERY |
|--------------------------|---|----------------------------------|
| HC.PFT.A.G2 | GLASS CERAMIC HOB / FRY TOP, ELECTRIC table top, 2 INDEPENDENT COOKING ZONES of 2.5 + 2.5 kw, ADJUSTABLE TEMPERATURE from 50 ° to 400 ° C, V 230/1, Kw 2.5 + 2.5 , dimensions 640x670x200h mm | Delivery from 4 to 9 days |
| PROFESSIONAL DESCRIPTION | | |

GLASS CERAMIC FRY TOP, ELECTRIC table :

- Stainless steel structure sealed to prevent infiltration;
- Glass ceramic cooking surface;
- High reliability radiant system;
- 2 independent cooking zones in glass ceramic of kw 2,5 each;
- 10 seconds to reach the glow;
- Adjustable temperature from 50 ° - 400 ° C;
- Heating system controlled by energy regulator;
- Operation indicator under the glass ceramic surface;
- Two complementary cooking systems: by contact and infrared;
- Excellent grilling without added fats;
- Homogeneous thermal distribution favored by the characteristics of the glass and resistance;
- High energy efficiency guaranteed by the particular thermal insulation of the resistance;
- Patented grease collection system;
- Quick and easy cleaning;
- Number of circuits: 2;
- Adjustment knobs: 2;
- Regulation system: Energy regulator;
- Heating system: Radiation;
- Dimensions mm 640x670x200h;
- Cooking area size: 510 × 450 mm;
- Glass dimensions: 643 × 535 mm;
- Feet height: 15-30 mm.

MADE IN ITALY

TECHNICAL CARD

| | |
|----------------------------------|----------|
| power supply | Monofase |
| Volts | V 230/1 |
| frequency (Hz) | 50 |
| motor power capacity (Kw) | 5,00 |
| net weight (Kg) | 14 |
| breadth (mm) | 640 |
| depth (mm) | 670 |
| height (mm) | 200 |