

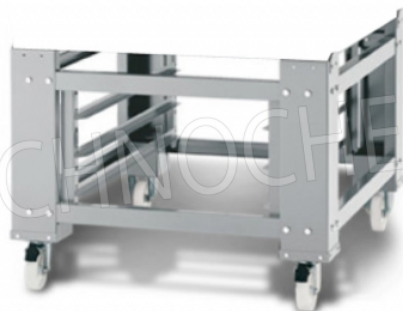


**TECNOSERVICE'21 srl**

by Tinti Sergio  
Via Carlo Pisacane, 134  
61032 Fano (PU) Italy  
P.IVA IT0200411413

Tel. +39 0721 805911  
FAX +39 0721 809794  
e-mail: [staff@technochef.it](mailto:staff@technochef.it)  
[www.technochef.it](http://www.technochef.it)  
[www.technochef.eu](http://www.technochef.eu)

Services and Technologies for professional catering since 1973




SUPPORTO IN ACCIAIO VERNICIATO

CODE	DESCRIPTION	PRICE/DELIVERY
<b>ITF-SCCB</b>	UNICO painted steel support for oven Mod. LCB / I and LCB / R, Weight 49 Kg, dim.mm.1010x1260x860h	<b>Delivery</b> from 8 to 15 days

PROFESSIONAL DESCRIPTION

TECHNICAL CARD

CODE/PICTURES	DESCRIPTION	PRICE/DELIVERY
<b>ITF-LCB/I</b> 	<b>Electric modular pizza oven, CL CLASSIC line, chamber for 6 60x90 cm pizzas entirely in refractory material</b> MODULAR electric pizza oven, for 6 pizzas diam. 300 mm, version with STAINLESS STEEL FRONT, CHAMBER COMPLETELY in REFRACTORY mm 600x900x170h, V.400/3, Kw.7,2, Weight 175 Kg, external dimensions mm 1000x1260x400h	<b>Delivery</b> from 8 to 15 days