



TECNOSERVICE'21 srl

by Tinti Sergio
Via Carlo Pisacane, 134
61032 Fano (PU) Italy
P.IVA IT0200411413

Tel. +39 0721 805911
FAX +39 0721 809794
e-mail: staff@technochef.it
www.technochef.it
www.technochef.eu

Services and Technologies for professional catering since 1973



CODE	DESCRIPTION	PRICE/DELIVERY
CD-A80/1B	Freezer-Freezer Pastry Cabinet, for 20 TRAYS of mm 600x400, 1 Door, Professional, Temp.-10°/-22°C, Ventilated, ECOLOGICAL in Class D, Gas R290, V.230/1, Kw.1,00 , Weight 150 Kg, dim.mm.810x715x2085h	
PROFESSIONAL DESCRIPTION		

FREEZER-FREEZER CABINET for PASTRY, 1 Door, It.650, Temp.-10°/-22°C, ECOLOGICAL in Class D :

- **Internal/external in AISI 304 stainless steel ;**
- external back, bottom and internal technical compartment in galvanized/colaminated steel;
- Rounded internal corners for easy cleaning;
- **Racks and guides in AISI 304 stainless steel ;**
- Handle in AISI 304 stainless steel, 2 mm thick;
- 1 self-closing door with stop at 105°, hinges on the right;
- Triple chamber door gasket, magnetic, easily replaceable;
- **Suitable for holding 20 pastry trays measuring 600x400 mm ;**
- **Ventilated refrigeration** with indirect air flow;
- **Hot gas / electric (remote) defrost ;**
- **Automatic evaporation** of condensate;
- Monocoque structure with **75 mm insulation** - CFC/HCFC free;
- Anti-corrosion treated evaporator;
- Electronic control, flush panel display;
- Made with FSS technology - Fast Service System - for an easy and fast service;
- Prepared for connection to a remote supervisory system;
- **LED lighting ;**
- **Lock with key ;**
- Adjustable **feet in AISI 304 stainless steel** h 100-150 mm.

TECHNICAL DATA :

- Gross capacity 573 l
- Temperature range -10°/-22°C
- Plug-In refrigeration unit
- Energy efficiency class D
- Energy efficiency index: 59.5
- Annual consumption: 1794 kW/h annum
- Consumption 24h: 4.915 kW/h/24h
- Climate class: 5
- R290 ecological refrigerant gas
- Defrost: With hot gas
- Solenoid valve supplied as standard
- Absorbed power 1000 W
- Current consumption 4.6A
- Cooling capacity 692 W* (Evap. -30°C Cond. +55°C)

Included :

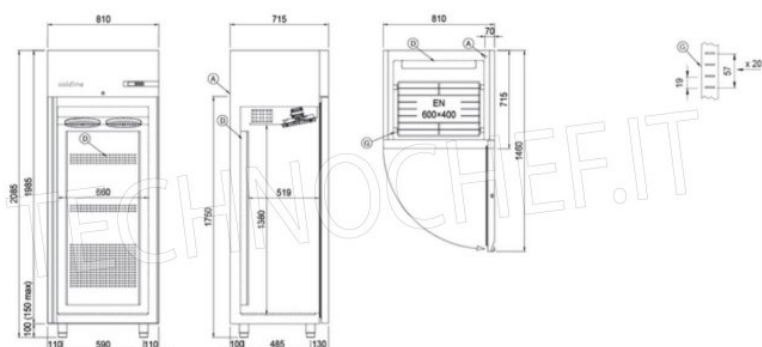
- 20 pairs of guides for 60x40 cm trays or grids
- LED lighting

CE MARK
MADE IN ITALY

TECHNICAL CARD

power supply	Monofase
Volts	V 230/1
frequency (Hz)	50
motor power capacity (Kw)	1,00
gross weight (Kg)	150
breadth (mm)	810
depth (mm)	715
height (mm)	2085

Disegno tecnico



A: Uscita cavo alimentazione

G: Cremagliere

D: Diffusore flusso aria