



TECNOSERVICE'21 srl

by Tinti Sergio
Via Carlo Pisacane, 134
61032 Fano (PU) Italy
P.IVA IT0200411413

Tel. +39 0721 805911
FAX +39 0721 809794
e-mail: staff@technochef.it
www.technochef.it
www.technochef.eu

Services and Technologies for professional catering since 1973



TECHNICAL CARD

power supply	Monofase
Volts	V 230/1
frequency (Hz)	5060
motor power capacity (Kw)	0,90
net weight (Kg)	90
breadth (mm)	560
depth (mm)	610
height (mm)	1050

PROFESSIONAL DESCRIPTION

VACUUM PACKAGING MACHINE with BELL on CABINET with WHEELS, with 450 mm SEALING BAR :

- **made of stainless steel ;**
- **vacuum chamber measuring 460x500x220h mm** , made of stainless steel pressed in a single piece with rounded corners for maximum hygiene and ease of cleaning;
- **450 mm welding bar, removable ;**
- **20/24 cubic meter/hour vacuum pump ;**
- **19 editable and customizable programs ;**
- **1 program for marinating meat ;**
- double "empty + liquid" sensor;
- **piston welding bar** , completely free of wiring for optimal and safe management of tank cleaning;
- **self-cleaning/heating pump system** for optimal management of the packaging machine, with a relative reduction in maintenance times and costs;
- **STEPVAC function** for creating a vacuum for liquid products inside traditional vacuum bags;
- **GASTROVAC function** for creating an external vacuum in GN containers;
- **EXTRAVAC function** , which offers a second vacuum phase lasting 5 seconds (particularly suitable for minced and boned meat);
- **reinforced welding function** for sealing thick bags and/or bags containing liquid/wet products;
- quick stop/weld;
- casing with 90° opening to facilitate access to the inside of the packaging machine;
- standard filler plates;
- adjustable hinges;

- vacuum cycle of your choice: timed or percentage-based with automatic start when the bell closes and automatic reopening at the end of the cycle;
- transparent tub lid with automatic lifting;
- possibility of extra vacuum up to 99.9% for very moist products;
- **Step Vac for emulsifiable products** (step vacuum cycle).

ACCESSORIES/OPTIONAL:

- possibility of vacuum in external containers or Gastro-Norm trays using a special kit - Cod.EMATUBOGN.
- provision for inert gas kit - Cod.EMGASINERTE.
- label printer - Cod.EMST.
- vacuum sensor in chamber - Cod.EMSV.
- welding bar with piston lift - Cod.EMBSP.
- sealing bar with excess bag cutting (waste) - Cod.EMTSU.
- additional welding bar - Cod.EMBS.
- bell stop bar - Cod.EMBF.
- inclined plane for liquid packaging - Cod.EMPI.

CE mark

Made in Italy

CODE	DESCRIPTION	PRICE/DELIVERY
EM-MIXER/L	EUROMATIC PROFESSIONAL BELL VACUUM PACKAGING MACHINE on CABINET with WHEELS, CHAMBER mm.460x500x220h, SEALING BAR 450 mm, VACUUM PUMP 20/24 cubic meters/hour, V.230/1, Kw.0.90, Weight 90 Kg, dim.mm.560x610x1050h	Delivery from 4 to 9 days

TECHNICAL CARD		
CODE/PICTURES	DESCRIPTION	PRICE/DELIVERY

EM-BF



TECHNOCHEF - Bell holder, Mod.BF

Delivery from 4 to 9 days

EM-BSU



TECHNOCHEF - Additional sealing bar, Mod.BSU

Delivery from 4 to 9 days

EM-GASINERTEURANO



TECHNOCHEF - Inert gas, Mod. GASINERTE

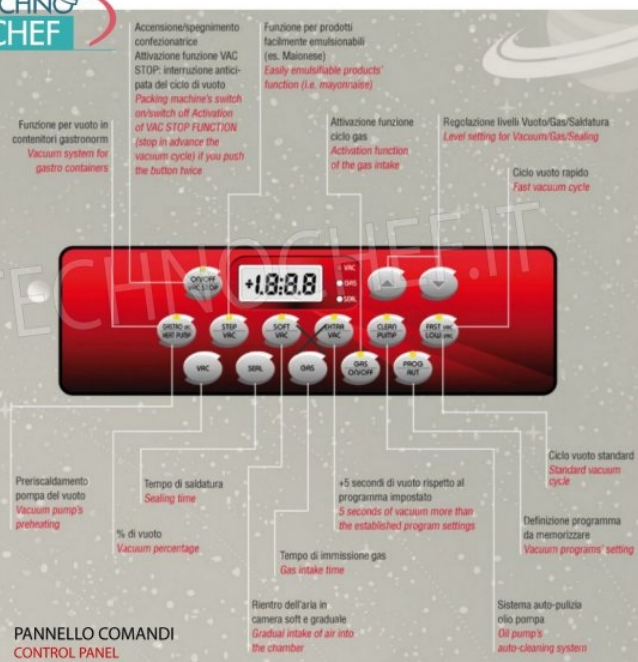
Delivery from 4 to 9 days

EM-ST



TECHNOCHEF - Label printer, ST mod

Delivery from 4 to 9 days

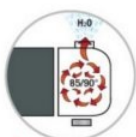


STANDARD FUNCTIONS PER CONFEZIONATRICI A CAMPANA

STANDARD FUNCTION ONLY FOR CHAMBER MACHINES



Pannello multifunzione digit - 10 PRG
Multifunction digit panel - 10 PRG



Sistema autopulizia olio
Oil made auto cleaning system



Pannello comandi a totale tenuta contro umidità
Waterproof control Panel



Soft vacuum elettronico
Electronic soft vacuum



Vasca inox con angoli stondati senza saldature
Entirely printed stainless steel vacuum chamber, with internal round corners



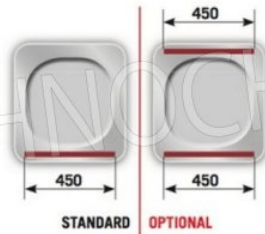
Connessione per attacco gastrovac
Connection for the gastrovac system



Set tavole di riempimento in polietilene
Polyethilene filling squares set

DISPOSIZIONE BARRE SALDANTI SEALING BARS POSITION

MIXER/L



OPTIONAL PER CONFEZIONATRICI A CAMPANA OPTIONALS ONLY FOR CHAMBER MACHINES



Installazione gas inerte
Arrangement for inert gas



Installazione stampante
Printer installation



Pompa Bosch
Bosch Pump



Saldatore con pistoni senza cavo
Sealing with cableless pistons



Barra saldatrice aggiuntiva
Extra Sealing Bar



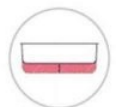
Taglio Eccedenza
Exceeding cutting bar



Sensore di vuoto
Vacuum sensor



Sistema bloccaggio coperchio
Lid Hook



Altezza camera maggiorata
Increased chamber height



Piano inclinato per liquidi
Inclined plane for liquids



Tensione e frequenza speciale
Voltage and special frequency